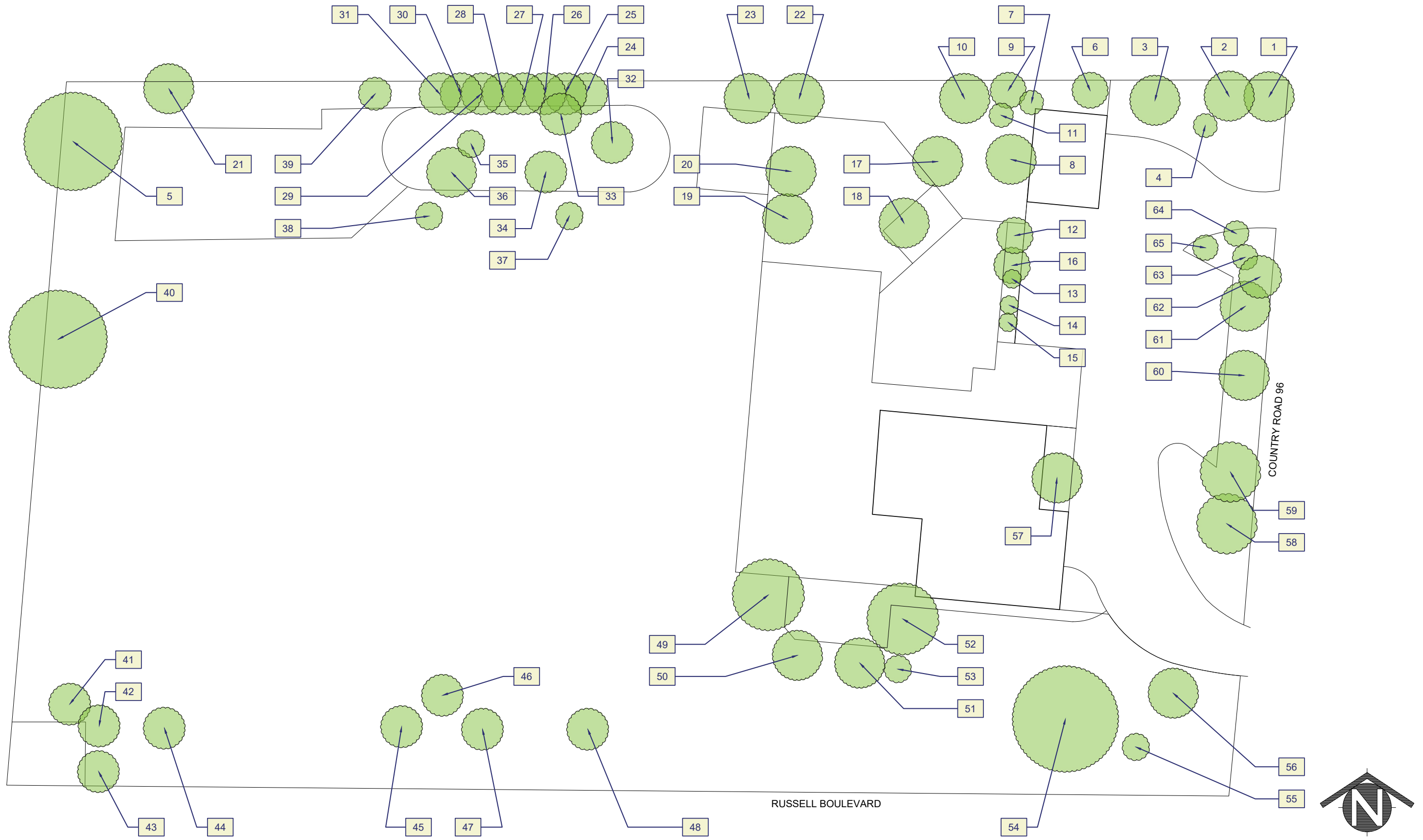


**Fairfield Elementary School**  
26960 Co Rd 96, Davis, CA 95616



## Tree Data

ID	Tree species - Common Name	Botanical Name	Deciduous/ Evergreen	Approx. Height Range (ft)	Approx. Canopy Width (ft)	Trunk Size DBH (in)	Observable Health Condition	Notes
F-1	Arizona Cypress	Cupressus arizonica	Evergreen	50	25	18	Tree growing into powerlines, leaning to south due to adjacent tree	
F-2	Arizona Cypress	Cupressus arizonica	Evergreen	50	25	11	Tree leaning to south due to adjacent oak tree, some dead branches	
F-3	Arizona Cypress	Cupressus arizonica	Evergreen	50	25	12	Tree leaning to south due to adjacent oak tree, some dead branches	
F-4	Valley Oak	Quercus lobata	Deciduous	8	3	1	No observable problems	
F-5	Black Walnut	Juglans nigra	Deciduous	62	56	19	Dual leader, multiple dead branches in canopy	
F-6	Elder	Sambucus nigra	Deciduous	17	22	7	Dead branches multi stem	
F-7	Redwood	Sequoia sempervirens	Evergreen	17	31	7	Mostly dead	
F-8	Redwood	Sequoia sempervirens	Evergreen	70	28	22	No observable problems	
F-9	Redwood	Sequoia sempervirens	Evergreen	34	17	9	Mostly dead	
F-10	Redwood	Sequoia sempervirens	Evergreen	45	20	13	No observable problems	
F-11	Sweet Bay	Laurus nobilis	Evergreen	20	14	10	Multi-Leader at base	
F-12	Crape Myrtle	Lagerstroemia indica	Deciduous	25	11	4	No observable problems	
F-13	Crape Myrtle	Lagerstroemia indica	Deciduous	5	6	2	Growing at base of palm	
F-14	Crape Myrtle	Lagerstroemia indica	Deciduous	7	6	2	No observable problems	
F-15	Crape Myrtle	Lagerstroemia indica	Deciduous	10	8	4	No observable problems	
F-16	California Fan Palm	Washingtonia robusta	Evergreen	28	17	11	Remove dead fronds to minimize nesting	
F-17	Valley Oak	Quercus lobata	Deciduous	50	39	15	No observable problems	
F-18	London Plane	Platanus x acerifolia	Deciduous	36	28	6	No observable problems	
F-19	Valley Oak	Quercus lobata	Deciduous	59	45	15	No observable problems	
F-20	Chinese Pistache	Pistacia chinensis	Deciduous	25	28	5	No observable problems	
F-21	Fruitless Mulberry	Morus alba 'fruitless'	Deciduous	50	50	12	No observable problems	
F-22	Arizona Cypress	Cupressus arizonica	Evergreen	45	45	16	No observable problems	
F-23	Arizona Cypress	Cupressus arizonica	Evergreen	45	45	17	No observable problems	
F-24	Arizona Cypress	Cupressus arizonica	Evergreen	62	22	11	No observable problems	
F-25	Arizona Cypress	Cupressus arizonica	Evergreen	62	22	15	No observable problems	
F-26	Arizona Cypress	Cupressus arizonica	Evergreen	62	22	12	No observable problems	
F-27	Arizona Cypress	Cupressus arizonica	Evergreen	62	28	16	No observable problems	
F-28	Arizona Cypress	Cupressus arizonica	Evergreen	62	28	16	No observable problems	
F-29	Arizona Cypress	Cupressus arizonica	Evergreen	62	45	15	No observable problems	
F-30	Arizona Cypress	Cupressus arizonica	Evergreen	62	39	24	No observable problems	
F-31	Arizona Cypress	Cupressus arizonica	Evergreen	62	45	21	No observable problems	
F-32	Black Walnut	Juglans nigra	Deciduous	20	14	4	Dead limb	
F-33	Chinese Pistache	Pistacia chinensis	Deciduous	34	20	6	No observable problems	
F-34	Valley Oak	Quercus lobata	Deciduous	22	8	3	Growing right up against the concrete	

Data Collection - Fairfield Elementary School - Tree Data

F-35	Ash	Fraxinus	Deciduous	31	11	5	Mistletoe, mostly dead	
F-36	Fruitless Mulberry	Morus alba 'fruitless'	Deciduous	42	17	9	Multi-Leader at base	
F-37	Valley Oak	Quercus lobata	Deciduous	8	6	1	Damage to base of trunk due to mowing	
F-38	Chinquapin Oak	Quercus muehlenbergii	Deciduous	3	1	0	No observable problems	
F-39	Black Walnut	Juglans nigra	Deciduous	12	10	1	No observable problems	
F-40	Valley Oak	Quercus lobata	Deciduous	50	28	16	No observable problems	
F-41	Valley Oak	Quercus lobata	Deciduous	22	8	2	Dual leader at 6', should remove one leader	
F-42	Ornamental Pear	Pyrus calleryana	Deciduous	31	8	7	Dead	
F-43	Ornamental Pear	Pyrus calleryana	Deciduous	34	11	7	Sucker growth at base of tree	
F-44	Ornamental Pear	Pyrus calleryana	Deciduous	34	17	6	Sucker growth at base, dead limbs	
F-45	Texas Umbrella Tree	Melia azedarach	Deciduous	31	34	10	Sucker growth at base, dead limbs in canopy	
F-46	Valley Oak	Quercus lobata	Deciduous	4	3	0	No observable problems	
F-47	Crape Myrtle	Lagerstroemia indica	Deciduous	6	5	1	No observable problems	
F-48	Chinese Hackberry	Celtis sinensis	Deciduous	28	22	10	Trunk is severely scared on west side of tree. Should be removed	
F-49	Green Ash	Fraxinus pennsylvanica	Deciduous	45	50	26	Mistletoe, dead limbs, tip dieback	
F-50	Green Ash	Fraxinus pennsylvanica	Deciduous	45	25	14	Mostly dead, severe lean to south	
F-51	Green Ash	Fraxinus pennsylvanica	Deciduous	45	25	13	Severe lean to south, some dead limbs	
F-52	Green Ash	Fraxinus pennsylvanica	Deciduous	45	50	24	Mistletoe, dead limbs, tip dieback	
F-53	Valley Oak	Quercus lobata	Deciduous	3	1	0	No observable problems	
F-54	Green Ash	Fraxinus pennsylvanica	Deciduous	67	45	33	Mistletoe, dead limbs, tip dieback	
F-55	Velvet Ash	Fraxinus velutina	Deciduous	7	2	0	No observable problems	
F-56	Valley Oak	Quercus lobata	Deciduous	14	3	1	No observable problems	
F-57	Toyon	Heteromeles arbutifolia	Evergreen	28	25	9	Close to building	
F-58	Crape Myrtle	Lagerstroemia indica	Deciduous	22	17	2	Crowded by adjacent tree	
F-59	New Mexico Locust	Robinia neomexicana	Deciduous	42	45	19	Dead branches in canopy	Memorial Tree
F-60	Crape Myrtle	Lagerstroemia indica	Deciduous	14	6	1	No observable problems	
F-61	Crape Myrtle	Lagerstroemia indica	Deciduous	11	8	1	No observable problems	
F-62	Chinese Hackberry	Celtis sinensis	Deciduous	36	31	13	No observable problems	
F-63	Crape Myrtle	Lagerstroemia indica	Deciduous	8	3	1	No observable problems	
F-64	Toyon	Heteromeles arbutifolia	Evergreen	20	11	8	Main limb is dead	
F-65	Valley Oak	Quercus lobata	Deciduous	3	1	1	No observable problems	